

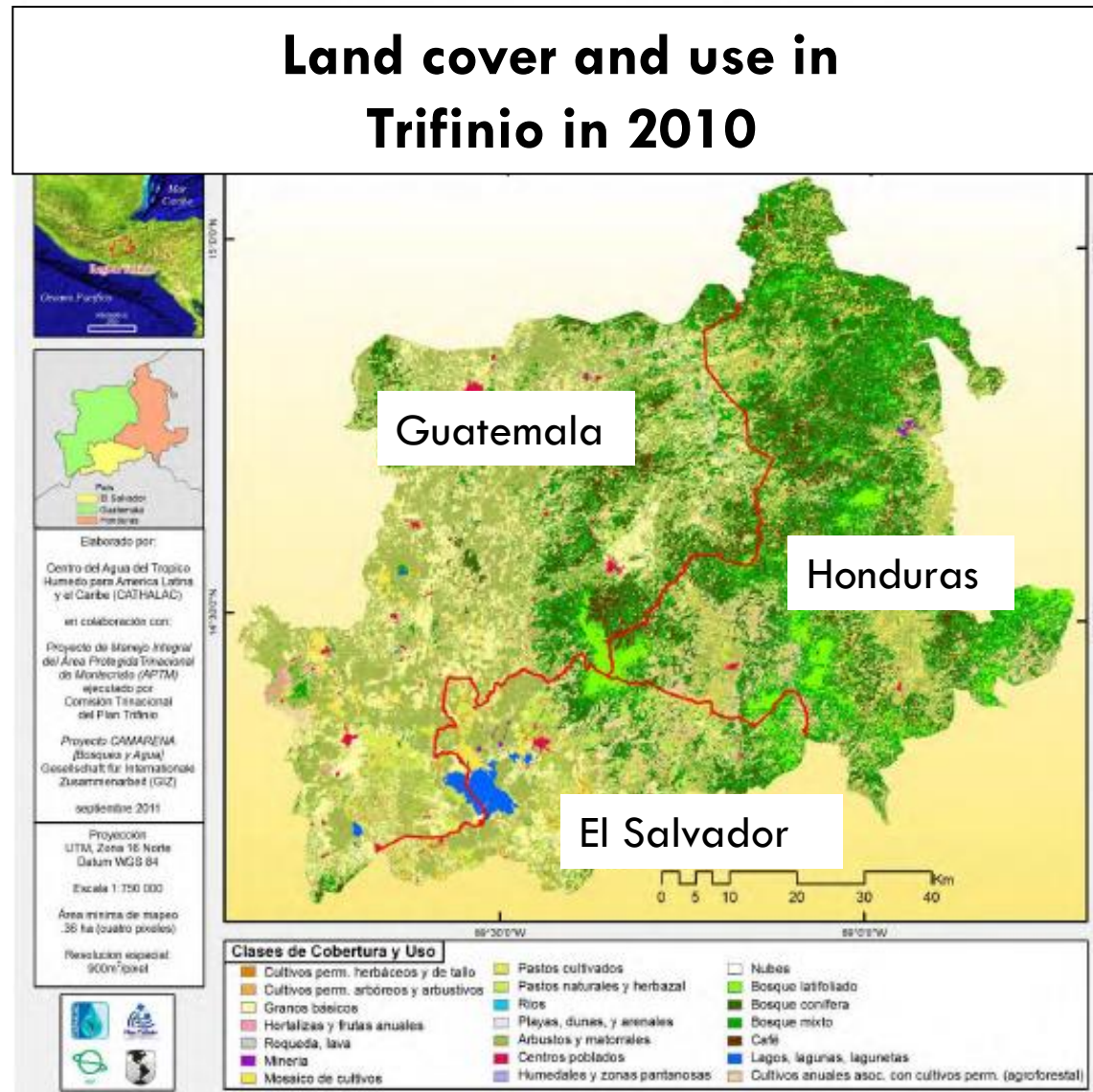
# AN EVALUATION OF THE IMPACT OF CONSERVATION STRATEGIES ON LCLUC AT A TRANSBOUNDARY SITE IN MESOAMERICA

Kelly Wendland

College of Natural Resources

University of Idaho

- Our overarching goal is to use temporal and spatial variation at a tri-border region to study the impact of transboundary conservation efforts on LCLUC and hydrological services.



# Objectives

- Map LCLUC using medium-scale (i.e., Landsat) imagery over 30 years and fine-scale (e.g., RapidEye, IKONOS) imagery over 10 years.
- Link LCLUC to observed changes in water supply over 10 years.
- Use program evaluation methods (e.g., matching, difference-in-difference) and satellite imagery to estimate the impact of conservation approaches on LCLUC across borders and over time.
- Use social science methods (e.g., interviews, surveys) to examine the impact of institutional capacity across borders on LCLUC and the impact of conservation approaches on socioeconomic outcomes.
- Evaluate the impact of fine- versus medium-scale resolution imagery on land cover-water supply linkages and program evaluation results.
- Compare outcomes of conservation approaches at a transboundary site (i.e., Trifinio Region) to conservation areas within the individual countries.